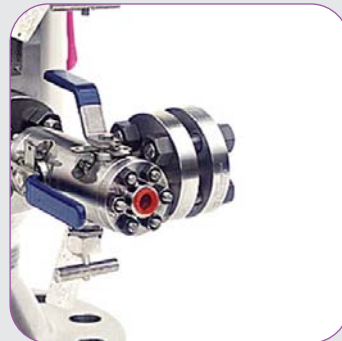
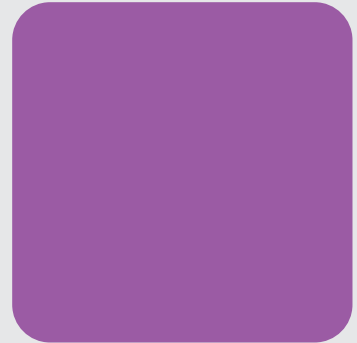
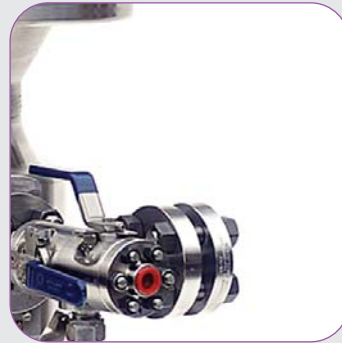


# Roxar Wetgas meter

WGM

Data Sheet



## When water is a concern

The Roxar state-of-the-art Wetgas meter measures real-time flow rates of water, gas and condensate, providing operators with vital information for optimized reservoir and process management.

The Roxar Wetgas meter is designed for installation in wells with GVF > 95% vol. The design allows for very compact solutions, simplifying installation and integration in onshore and offshore topside facilities.

### Unique Water Sensitivity

The Roxar Wetgas meter employs the same proven, unique and patented microwave technology as the Roxar Watercut meters. This technology allows for unmatched sensitivity to changing water and salinity levels.

### Field Proven Technology

The Roxar Wetgas meter is based on proven technology and is used by operators all over the world. The Roxar Wetgas meter has been operational since 2003.



INTERPRETATION



MODELING



SIMULATION



WELL & COMPLETION



PRODUCTION & PROCESS

## Specifications

### General Specifications

#### Operating range:

- 95-100% GVF
- 0-100% WLR for GVF > 99%
- 0-50% WLR for GVF < 99%

#### Typical Velocity range:

- 5 to 40 m/s

#### Pipe dimensions:

- 2" - 12"

#### Design pressure:

- Up to 10,000 psi

#### Design temperature:

- Up to 150°C / 302°F

### General Performance

#### Typical uncertainty:

- 90% confidence int.

#### Water fraction measurement:

##### Uncertainty:

- GVF > 99%: ±0.1 abs. vol.%
- GVF < 99%: ±0.2 abs. vol.% (WLR < 50%)

##### Sensitivity:

- < 0.005 abs. vol.%

#### Hydrocarbon mass flow:

##### Uncertainty:

- ±5% relative

##### Sensitivity:

- 0.5%

### Interface Details - Mechanical

#### Sensor body material:

- Duplex (standard) or to customer specifications

#### Flange connection:

- ANSI or hub connections

#### Mass Flow Device:

- V-cone®

#### Length:

- < 1 meter

#### Weight:

- 2" - 8": 90 - 370kg

#### Installation:

- Vertical upward flow (recommended)

### Interface Details - Electrical

#### Electrical housing material:

- Stainless steel / aluminium

#### Weather protection:

- IP66 / NEMA 7

#### Mounting:

- Field mounted, 2m from sensor

#### Temperature:

- Maximum ambient 60°C / 140°F

#### Weight:

- Approximately 75kg

#### Voltage supply:

- 100 - 240 VAC, 50 or 60 Hz or 20 - 28 VDC

#### Power consumption:

- Maximum 35W, nominal 25W

#### Hazardous area approval:

- ATEX / CSA

### Interface Details - Logic

#### User input:

- Hydrocarbon composition - up to 5 different sets of hydrocarbon compositions easily updated from the service console software

#### Serial port:

- RS485

#### Communication protocol:

- Modbus RTU

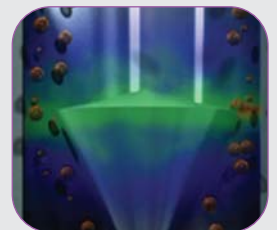
#### Output (examples):

- Water volume fraction, volume and mass flow rates of water, oil and gas, oil and gas at reference and actual conditions, differential pressure, temperature, pressure, alarm and warnings, GOR

### Add-on Modules

- Formation Water Detection
- Gamma Densitometer
- Roxar Fieldmanager Software
- Roxar Fieldwatch - WGM Instrument Console Software
- Dual redundant dp-measurement

## Roxar Wetgas meter



[WWW.ROXAR.COM](http://www.roxar.com)

For further information  
please contact your  
regional office or  
email: [info@roxar.com](mailto:info@roxar.com)  
or visit [www.roxar.com](http://www.roxar.com).

Scandinavia  
CIS  
Europe/Africa  
Americas

Tel: +47 51 81 88 00  
Tel: +7 495 504 3405  
Tel: +44 1224 411 200  
Tel: +1 713 334 2222

Middle East  
Asia Pacific  
Australia

Tel: +973 17 517 111  
Tel: +603 2162 4450  
Tel: +61 8 9315 9500



INTERPRETATION



MODELING



SIMULATION



WELL & COMPLETION



PRODUCTION & PROCESS