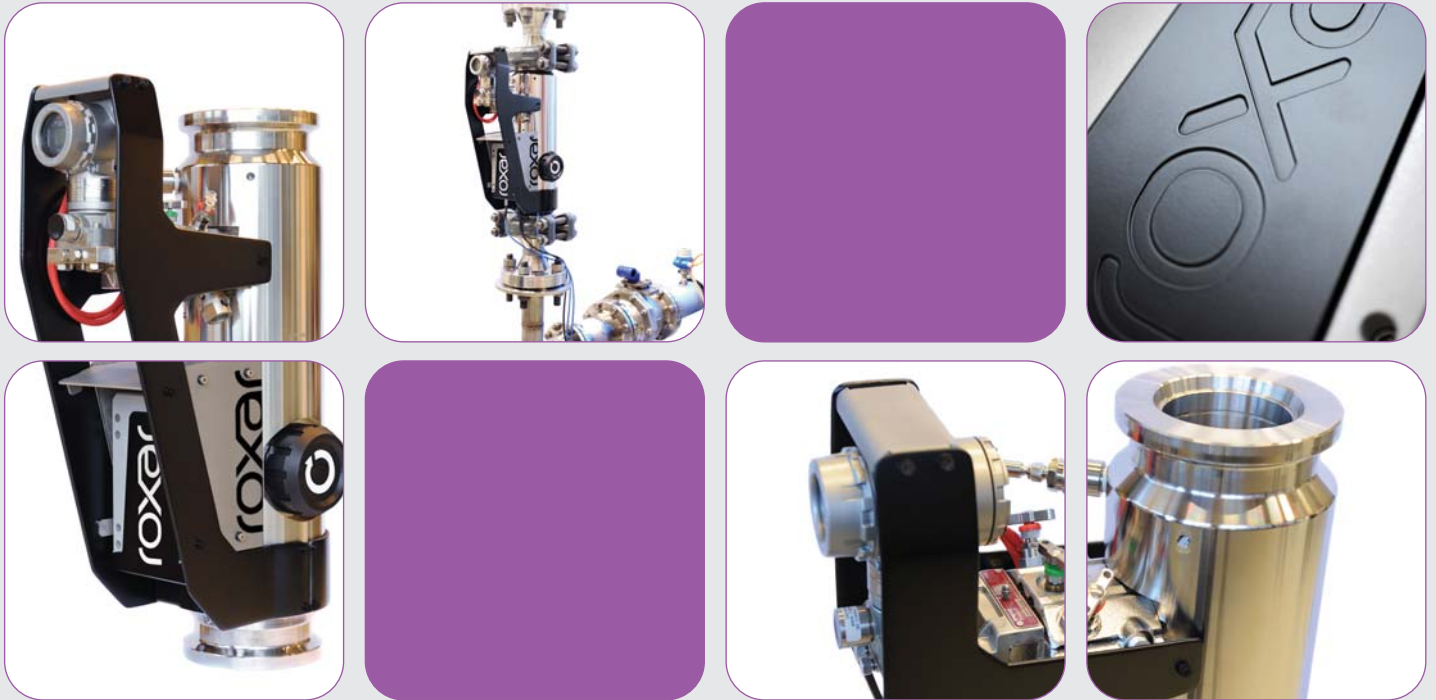


Roxar Multiphase meter 2600

Built on Zector™ technology

Data Sheet



Roxar 2600 Class - The next generation Multiphase meters

Welcome to the new standard in multiphase metering technology

Roxar 2600 Class

- Simple, light-weight design, 80% weight reduction and half length compared to previous generation
- Innovative Zector™ technology: Advanced signal processing, new field electronics and innovative electrode geometry
- Field replaceable insert venturi
- Compact, integrated measurement solution for pressure, differential pressure and temperature
- Non radioactive version covering most operating conditions
- Compact gamma density system for special applications and high GVF

Roxar Zector™ technology

The 2600 Class non radioactive Zector™ technology provides an accurate and real-time characterisation of flow patterns.

The voxel-based signal processing and electrode geometry provides information never previously available, including multiple flow velocity data and near wall measurements. The technology comprises a new compact sensor geometry which allows for measurements in individual sectors in addition to full cross-sectional area measurement.

Roxar is introducing the new class of compact multiphase meters for operators who are looking for production optimisation, flow assurance and improved well testing. The reduced size will allow operators to install the meter on individual wells and in previously inaccessible locations.

Roxar Multiphase meter 2600 – Designed for the future – ready for today.



INTERPRETATION



MODELING



SIMULATION



WELL & COMPLETION



PRODUCTION & PROCESS

Specifications

The specifications below are for a cost optimum solution that will meet most operator requirements. However, Roxar can provide tailor made solutions to fit any application and specifications needed.

System performance and characteristics

Operating range:

- 0-100% water in liquid ratio (WLR)
- 0-100% gas volume fraction (GVF)

Meter sizes:

- 2" – 6"

Installation:

- Vertical upwards flow

Typical uncertainty (95% confidence int.):

- Liquid rate: +/-2% relative
- Water cut: +/-2% absolute
- Gas rate: +/-5% relative

Design pressure:

- 5000 psi (345 bars)

Operating temperature:

- Up to 150 °C (302 °F)

Mechanical and electrical components Meter body

Wetted parts materials:

- Duplex UNS 31803 or other upon request

Flange connection:

- Grayloc®/Techlok® hub

Length:

- 650 mm (3")

Weight:

- 110 kg (3")

Venturi

- Insert design, field replaceable
- Compact isolation valve and manifold
- Rosemont 3095 Multivariable™ Transmitter (DP, P & T)

Density measurements

Roxar non-gamma software:

- Recommended for GVF up to 95%

Roxar compact gamma system:

- Recommended for all applications
- Source: Cs-137, 2 mCi, Half-life 30.1 years
- Detector: Roxar T205

Sensor technology

DP 26 – Multi electrode, dual plane Roxar Zector™ technology

Power supply

Voltage:

- 18-36 VDC, 100-240 VAC

Power consumption:

- 12W

Communication interface

Comm ports:

- RS-232/RS-485/Ethernet

Communication protocol:

- Modbus ASCII/RTU/TCP

Electrical certification

- Sensor electronics: Ex-i
- Compact gamma detector: Ex-d
- Flow computer: Ex-d or safe area

Software

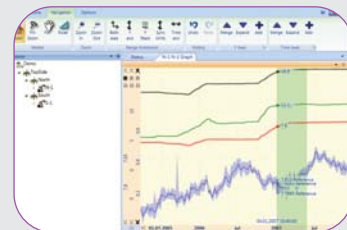
- Roxar Fieldwatch

Add-on modules:

- Acoustic Sand monitor
- Roxar Fieldmanager, Well test package, PVTx, Communications, +++



Roxar Multiphase meter 2600



www.roxar.com

For further information please contact your regional office, email zector@roxar.com or visit www.roxar.com/zector.

Scandinavia
CIS
Europe/Africa
Americas

Tel: +47 51 81 88 00
Tel: +7 495 504 3405
Tel: +44 1224 411 200
Tel: +1 713 334 2222

Middle East
Asia Pacific
Australia

Tel: +973 17 517 111
Tel: +603 2162 4450
Tel: +61 8 9315 9500



INTERPRETATION



MODELING



SIMULATION



WELL & COMPLETION



PRODUCTION & PROCESS